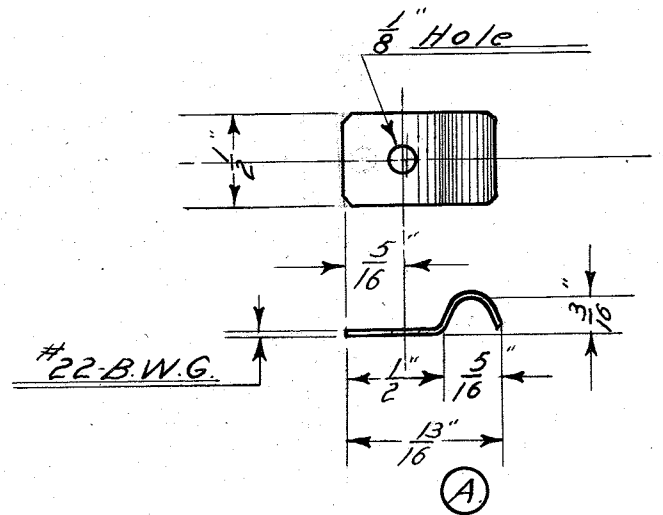


AM-29-Q.

Ⓐ From 1" to $\frac{13}{16}$ " --- 4-12-11.

Ⓑ From 4 to 2 required -- 1-29-12



Handwritten notes:
 See BM-31-0
 1912

TUDHOPE MOTOR Co.	
ORILLIA CANADA	
WIRE FASTENER	
DRAWING NO. - AM-29-Q	
MAT'L. - SHEET BRASS	
NO. REQUIRED. - 2	
DRAWN BY - FLG. CHECKED BY -	
TRACED BY - FLG. APP BY -	
DATE - 2-24-1911.	

Ⓑ