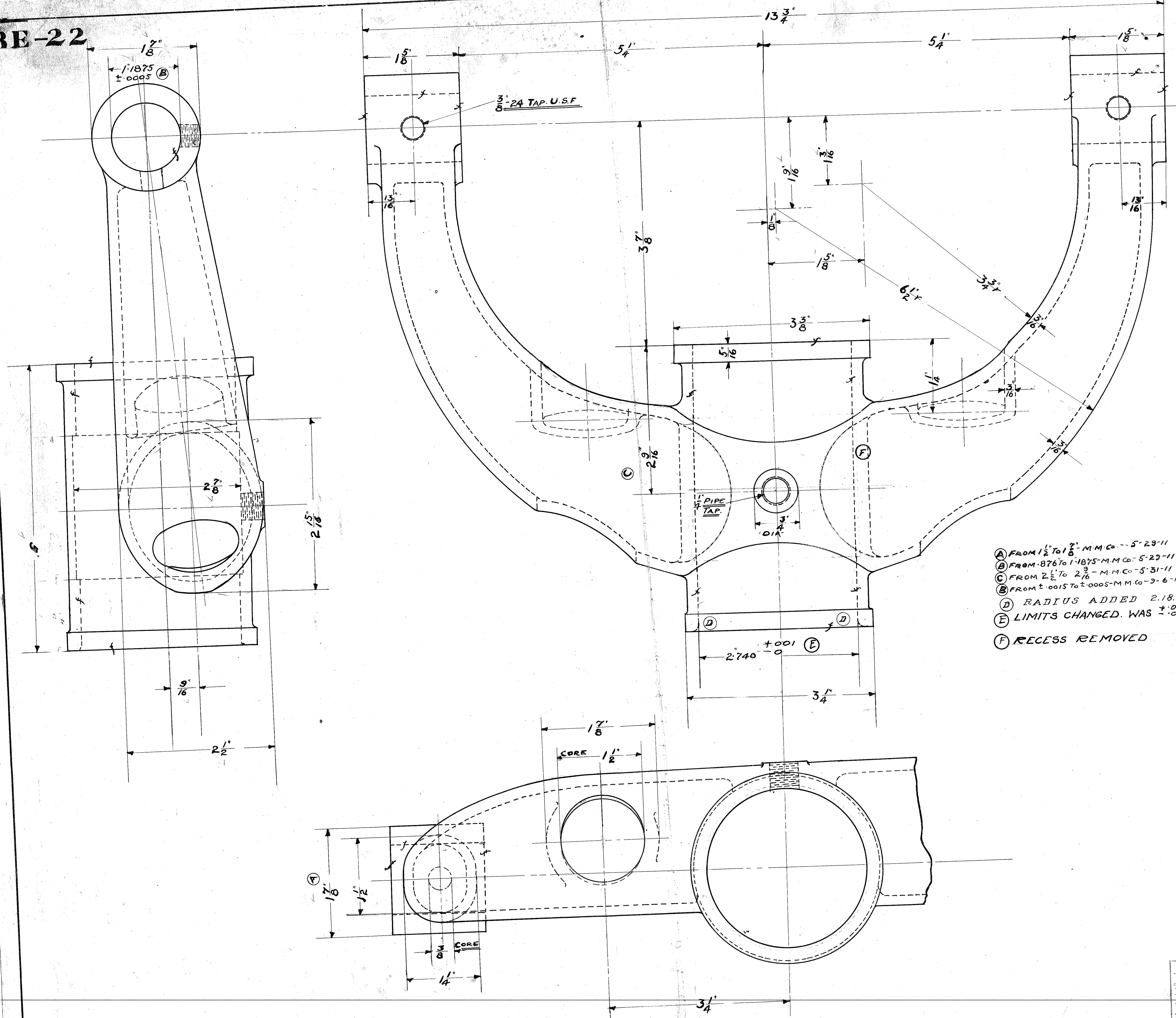


BE-22



- Ⓐ FROM 1 1/2" TO 1 3/8" M.M.C. - 5-29-11
- Ⓑ FROM .876 TO 1.1875 M.M.C. - 5-29-11
- Ⓒ FROM 2 1/2" TO 2 9/16" M.M.C. - 5-31-11
- Ⓓ FROM ±.0015 TO ±.0005 M.M.C. - 9-6-11
- Ⓔ RADIUS ADDED 2.18.13
- Ⓕ LIMITS CHANGED. WAS ±.0015 2.19.13
- Ⓖ RECESS REMOVED 2.19.13

TUDHOPE MOTOR CO.	
ORILLIA, CANADA	
TORQUE TUBE	
YOKE	
DRAWING NO.	BE-22
MATERIAL	MALL IRON
NO. REQUIRED	1
DRAWN BY	RWC
CHECKED BY	JLA
DATE	5-29-11 - 9-30-12