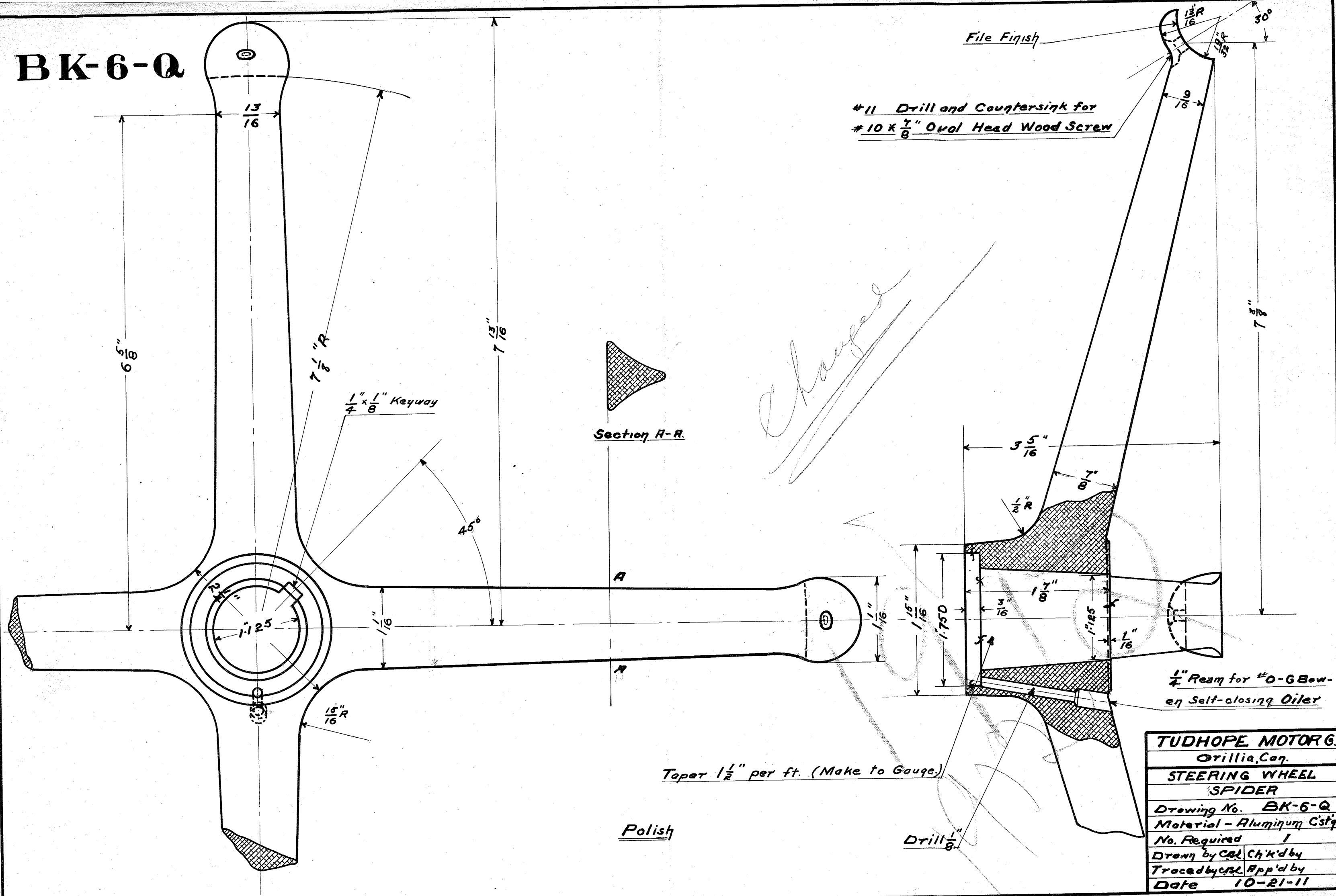


# BK-6-Q



#11 Drill and Countersink for  
#10 x  $\frac{7}{8}$ " Oval Head Wood Screw

File Finish

Section R-R

*changed*

$\frac{1}{4}$ " Cham for #0-68 worm  
Self-closing Oiler

Taper  $\frac{1}{2}$ " per ft. (Make to Gauge.)

Polish

Drill  $\frac{1}{8}$ "

TUDHOPE MOTOR CO.	
Orillia, Can.	
STEERING WHEEL SPIDER	
Drawing No.	BK-6-Q
Material	Aluminum Castg.
No. Required	1
Drawn by	Ch'k'd by
Traced by	App'd by
Date	10-21-11