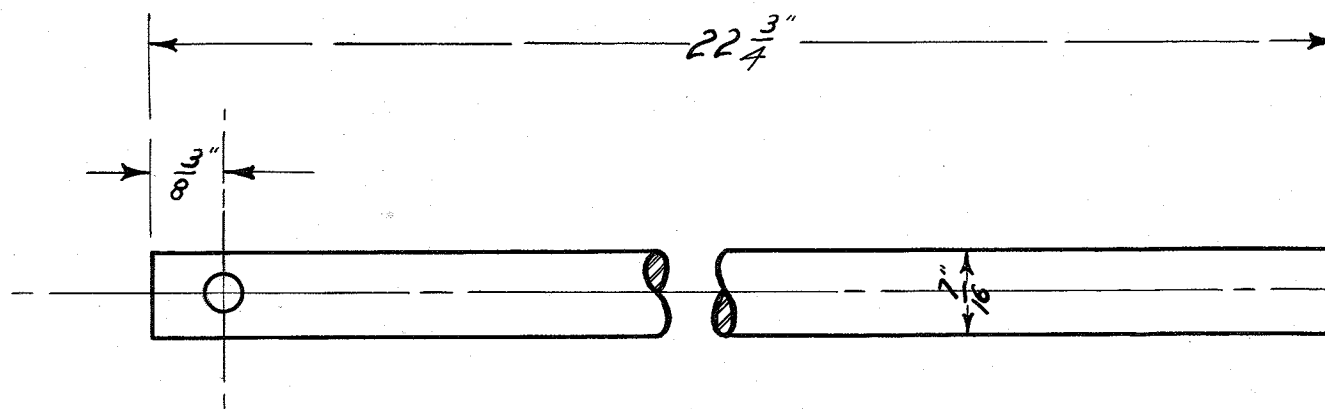


AN-163.



*1910
checked*

TUDHOPE MOTOR Co.	
ORILLIA CANADA.	
MUFFLER CUT OUT	
SHAFT.	
DRAWING NO. - AN-163.	
MAT'L. - C.R.S.	
NO. REQUIRED - 1.	
DRAWN BY - W.J.G.	CHECKED BY - O.P.
TRACED BY - F.L.G.	APP. BY -
DATE - 12-19-1910.	