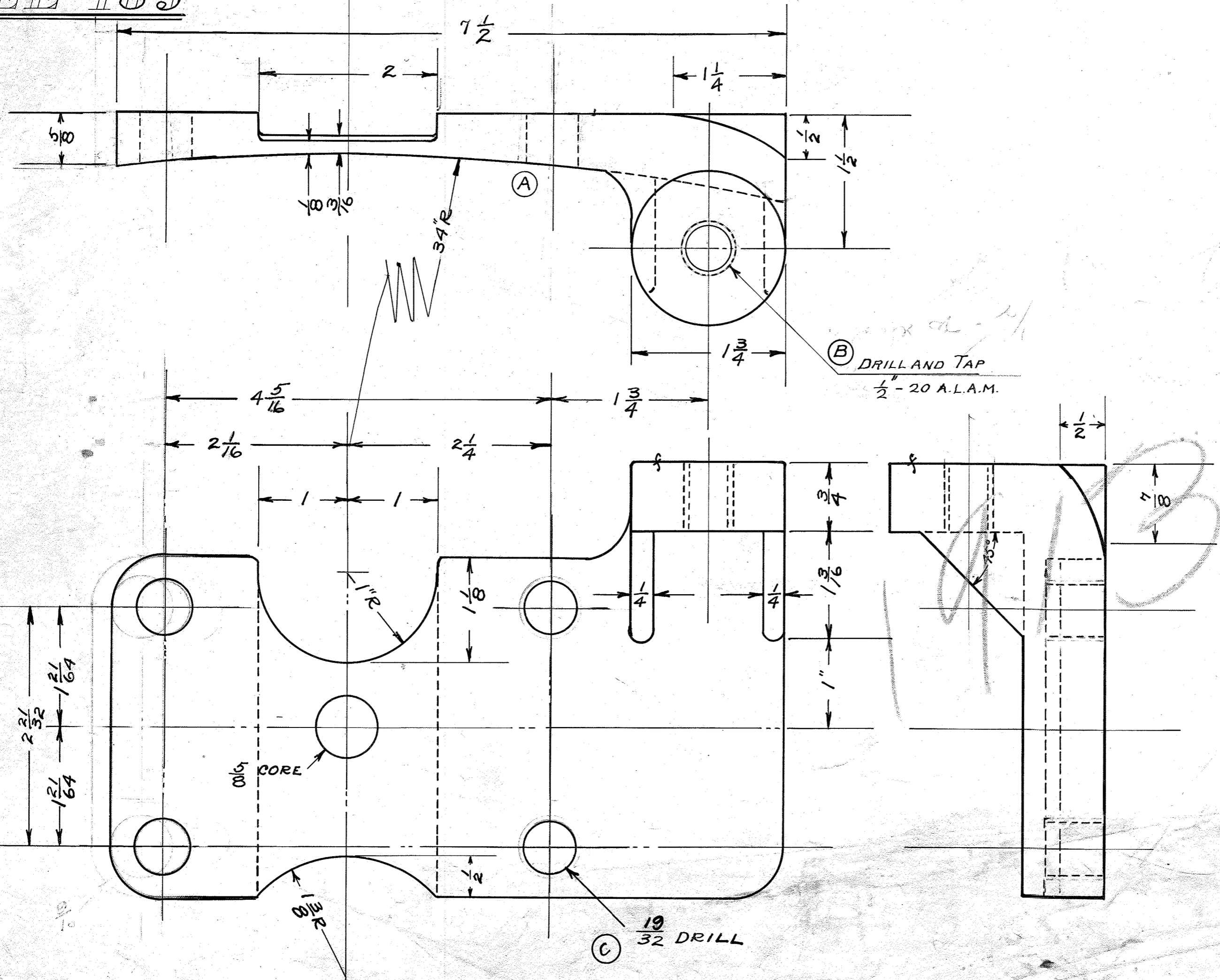


EE-185

3



- (A) LOCATION OF HOLES CHANGED  
1/2/1913
- (B) CHANGED FROM " $\frac{19}{32}$  DRILL"  
12-6-12.
- (C) CHANGED FROM " $\frac{3}{16}$  DRILL"  
1/4/1913

(B) DRILL AND TAP  
 $\frac{1}{2}$ " - 20 A.L.A.M.

(C)  $\frac{19}{32}$  DRILL

0015 CORE

TUDHOPE MOTOR CO. ORILLIA, CANADA	
LOWER SPRING CLIP PLATE REAR (RIGHT)	
DRAWING NO.	EE-185
MATERIAL	MALL. IRON
NO. REQUIRED	1
DRAWN BY	J.C.E.
CHECKED BY	
TRACED BY	J.C.E.
APP'D BY	
DATE	11-16-1912

J.C. EILMS. 123 1/2/1913