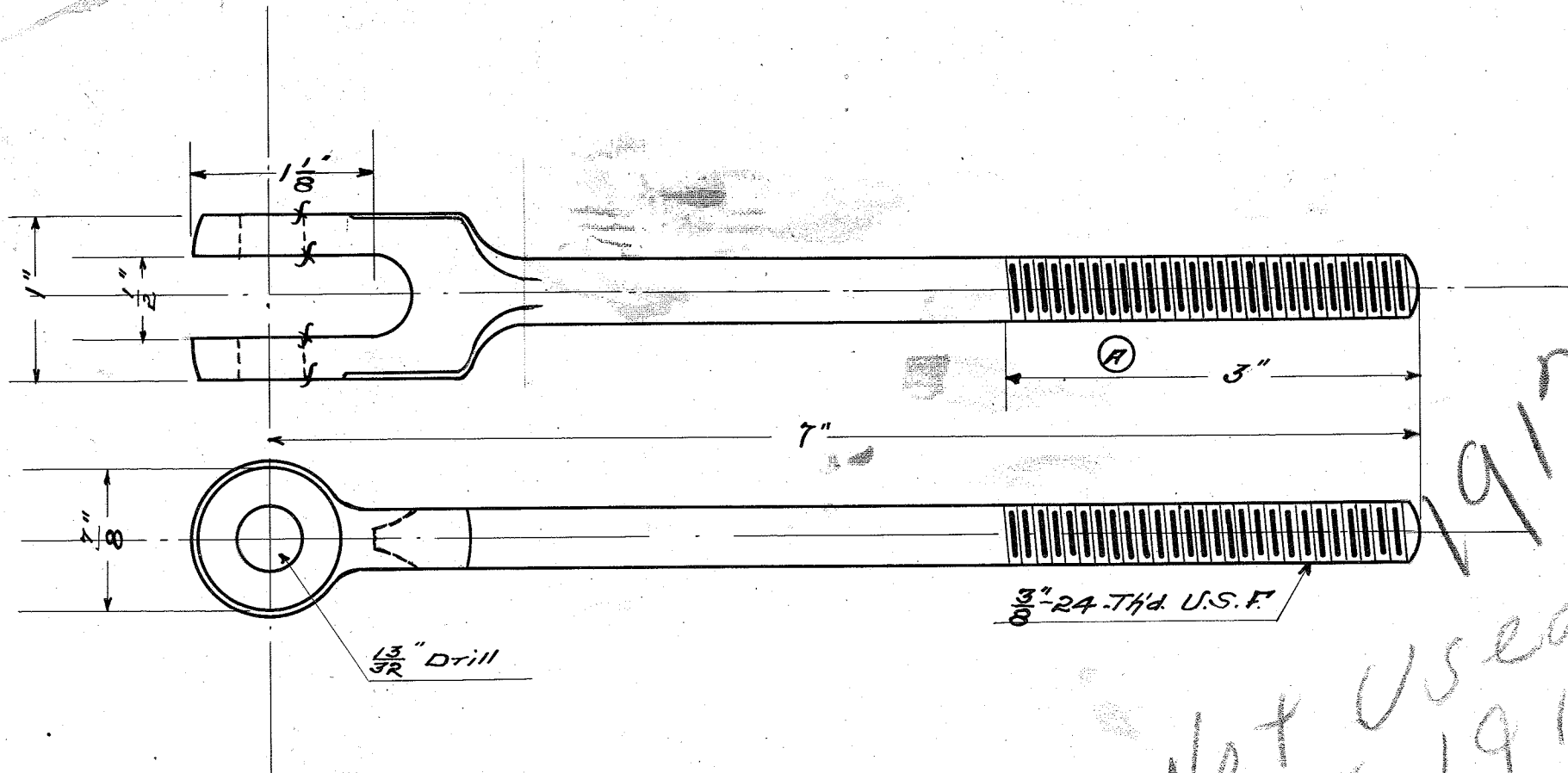


BL-15

(R) From 2 1/2" to 3" ... 11-2-11.



1912
Not Used
for 1913
FILE

#2 B.&S. STD. YOKE END.

Length of head --- 4"
Length of stem -- 3 1/8"

TUDHOPE MOTOR CO.	
Oroville, Cal.	
Internal Brake Rod (L. H. - Short)	
Drawing No. BL-15.	
Material - D.F.S.	
No. Required - 1	
Drawn by R.H.C.	chk'd by - F.L.G.
Traced by C.B.L.	App'd by
Date - 3-28-1911	