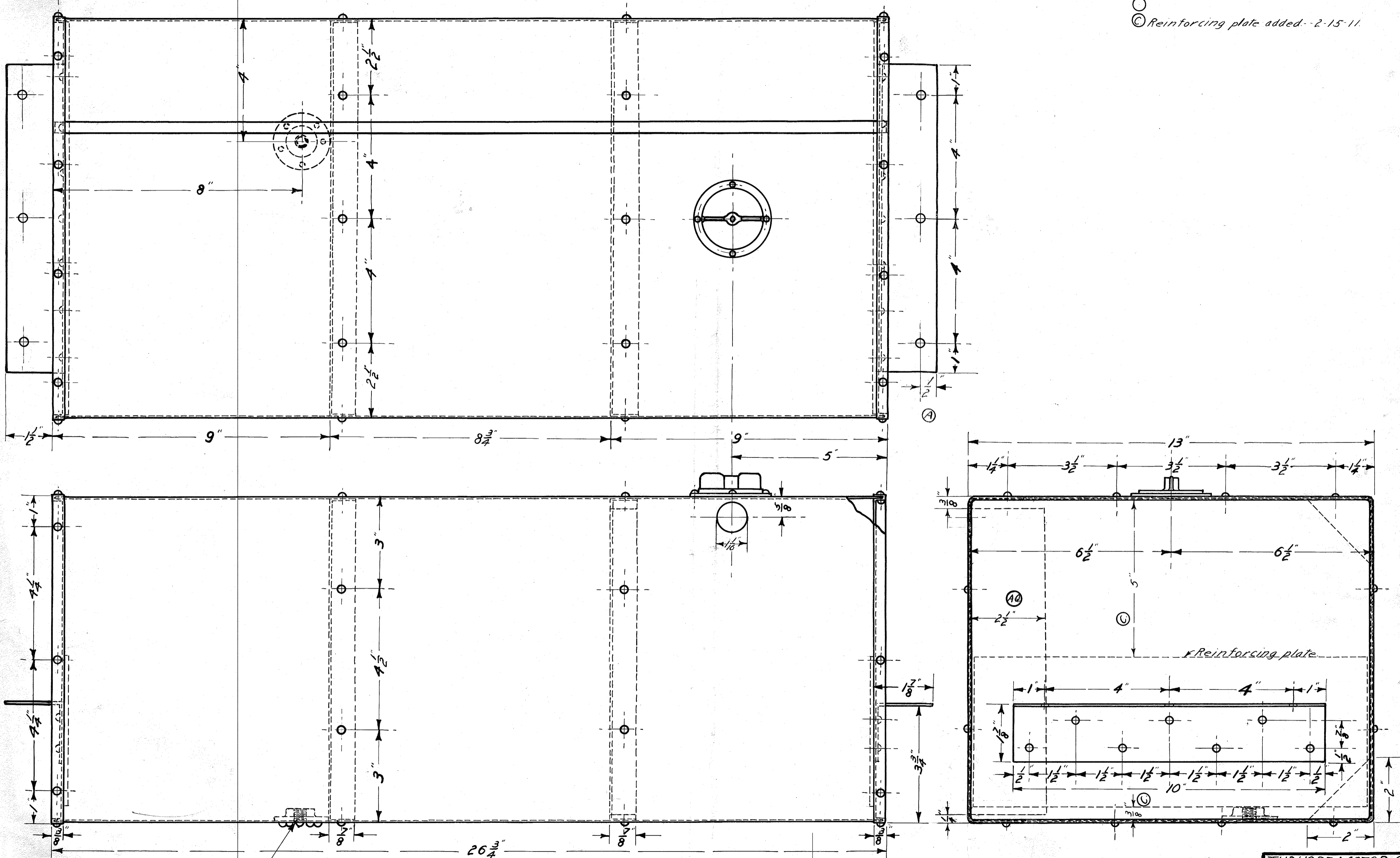


A-N-69-A.

- (A) Changed - - - - - 1-27-11 - F.L.G.
- (B) "4 Door" added - - - - - 2-11-11 - F.L.G.
- (A) From $\frac{3}{4}$ " to $\frac{1}{2}$ " - - - - - 1-31-11.
- (C) Reinforcing plate added - - 2-15-11.



TUDHOPE MOTOR Co.
 ORILLIA CANADA
GASOLINE TANK.
 (Runabout 4 Door)

(B) DRAWING NO. - A-N-69-A.
 MAT'L - TINNED IRON
 NO. REQUIRED - 1
 DRAWN BY - *Q.H.* CHECKED BY -
 TRACED BY - F.L.G. APP. BY -
 DATE - 11-10-09