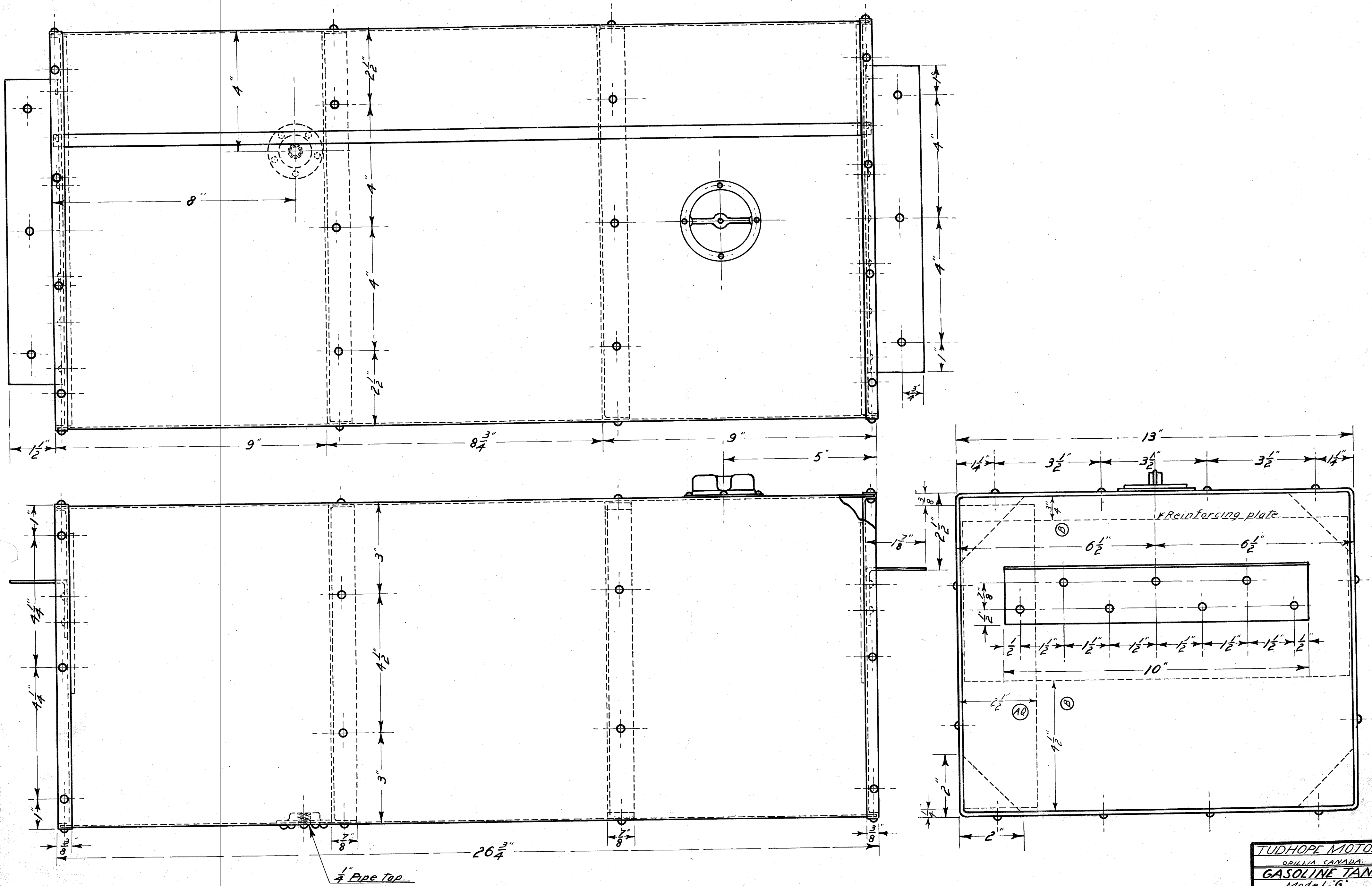


AN-69-C.

(A) Changed ----- 1-27-11

(B) Reinforcing plate added - 2-15-11.



TUDHOPE MOTOR Co.
 ORILLIA, CANADA
GASOLINE TANK
 Model - "G"
 DRAWING NO. AN-69-C.
 MAT'L-TINNED IRON.
 NO. REQUIRED - 1
 DRAWN BY - CHECKED BY -
 TRACED BY - FLG APP. BY -
 DATE - 12-7-1910.