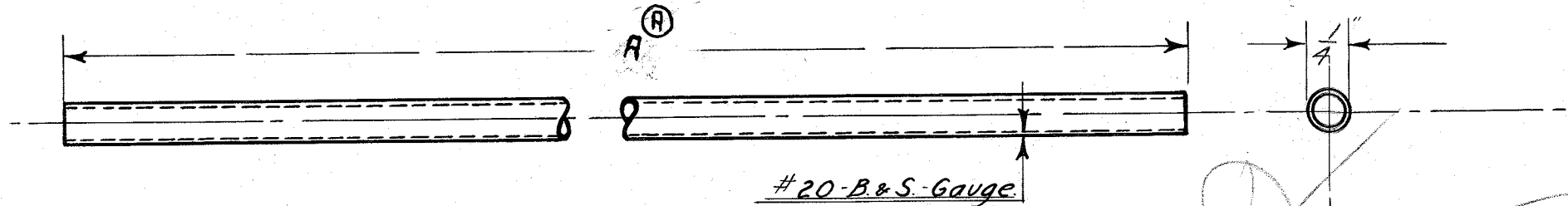


# AN-127-Q.

Ⓐ Length changed -- 3-23-12



A for 4 cyl. - 42"  
A for 6 cyl. 56"

*Handwritten signature*

TUDHOPE MOTOR Co.	
ORILLIA CANADA.	
GAS LAMP TUBING	
(Left)	
DRAWING NO. - AN-127-Q.	
MAT'L. - COPPER TUBING	
NO. REQUIRED. - 1.	
DRAWN BY - FLG.	CHECKED BY - D.R.
TRACED BY - FLG.	APP. BY -
DATE - 2-21-1911.	