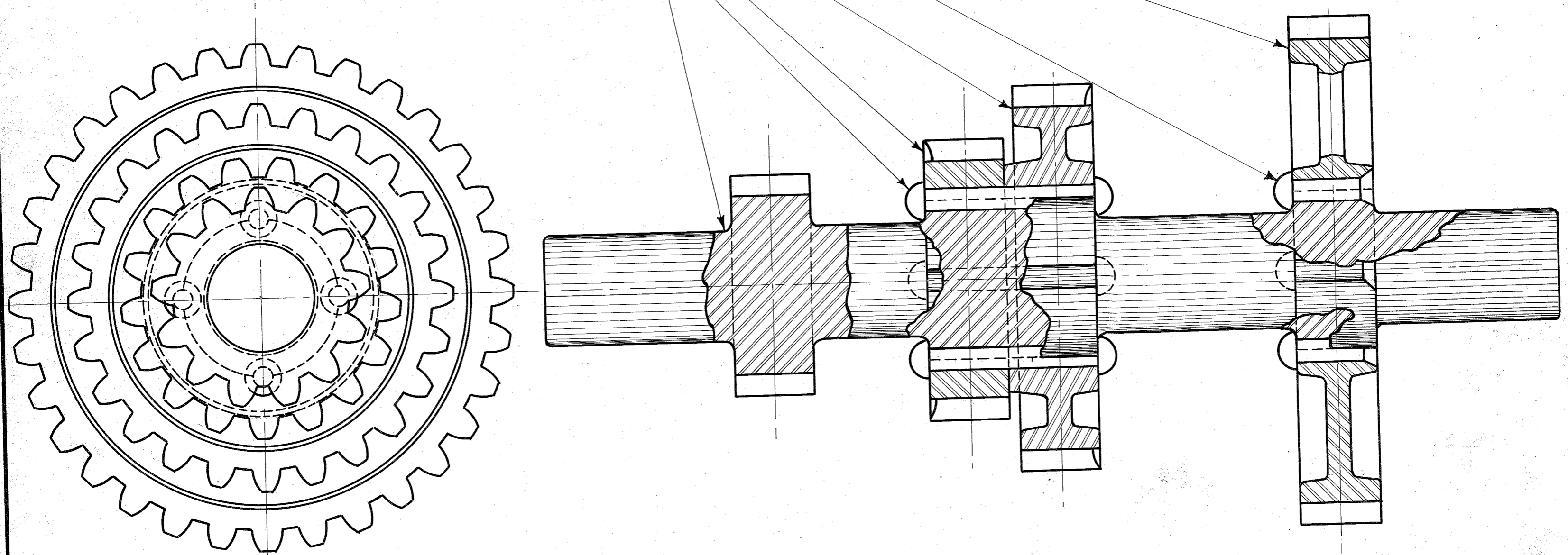


AD-39.

- AD-5.**
- AD-16.**
- AD-6.**
- AD-4.**
- AD-15.**
- AD-11.**



TUDHOPE MOTOR Co.
ORILLIA CANADA
COUNTERSHAFT
ASSEMBLY
DRAWING NO.-AD-39
MAT'L.-
NO. REQUIRED.-1
DRAWN BY-TGC CHECKED BY-FLG
TRACED BY-FLG APP. BY-
DATE-4-26-1910.