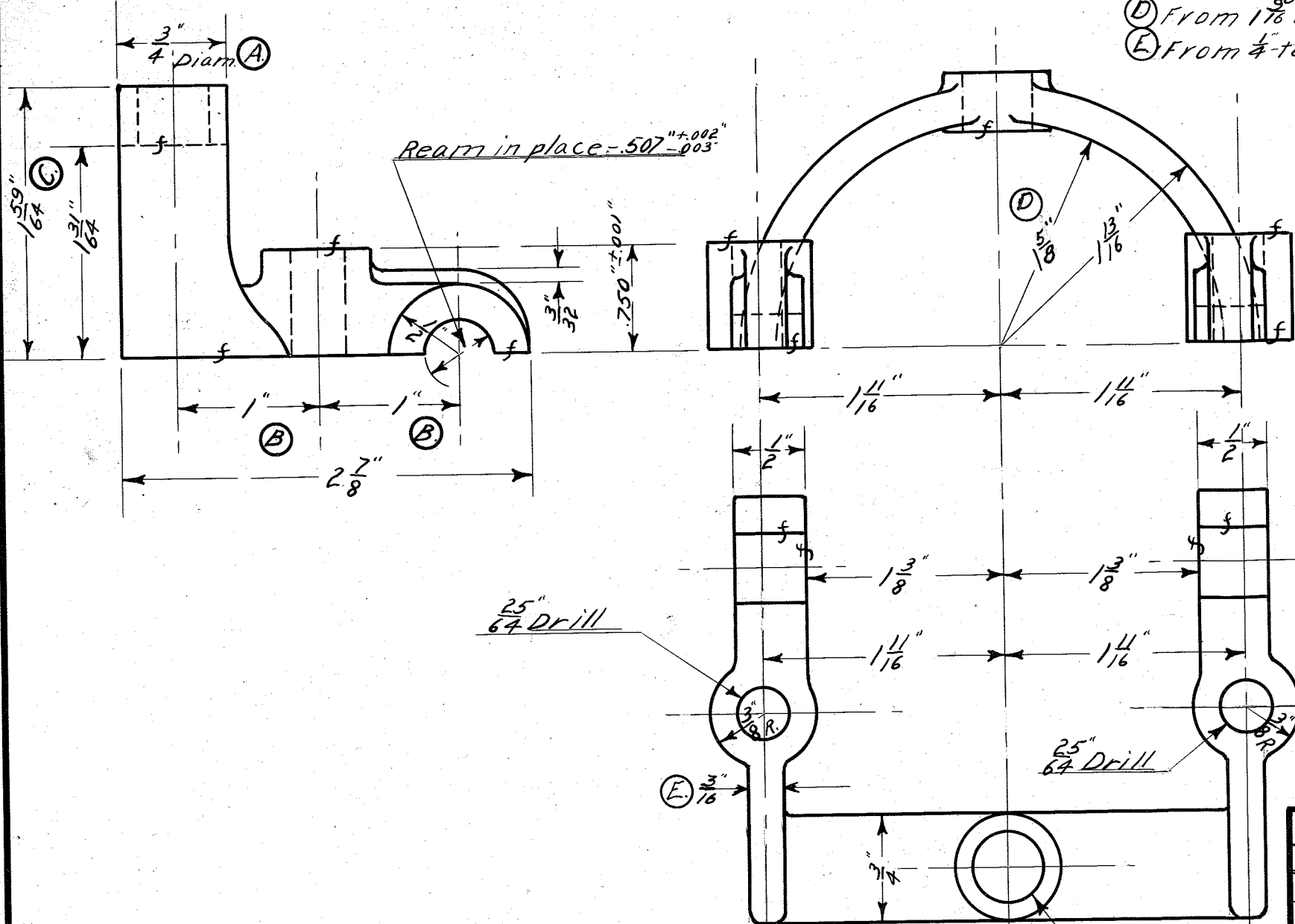


BL-27.

- Ⓐ From $1\frac{1}{4}$ " to $1\frac{3}{4}$ " ----- 5-26-11.
- Ⓑ From $1\frac{3}{4}$ " to $1\frac{1}{2}$ " ----- 5-26-11.
- Ⓒ From $1\frac{59}{64}$ " to $1\frac{59}{64}$ " ----- 5-26-11.
- Ⓓ From $1\frac{5}{16}$ " to $1\frac{5}{16}$ " ----- 10-23-11.
- Ⓔ From $1\frac{1}{2}$ " to $1\frac{3}{4}$ " ----- 10-23-11.



1912

TUDHOPE MOTOR CO.	
ORILLIA CANADA	
CLUTCH SHIFTER	
YOKE	
DRAWING NO. - BL-27	
MAT'L - MALL. IRON.	
NO. REQUIRED. - 2	
DRAWN BY - A.J.	CHECKED BY -
TRACED BY - F.L.G.	APP. BY -
DATE - 5-26-1911.	