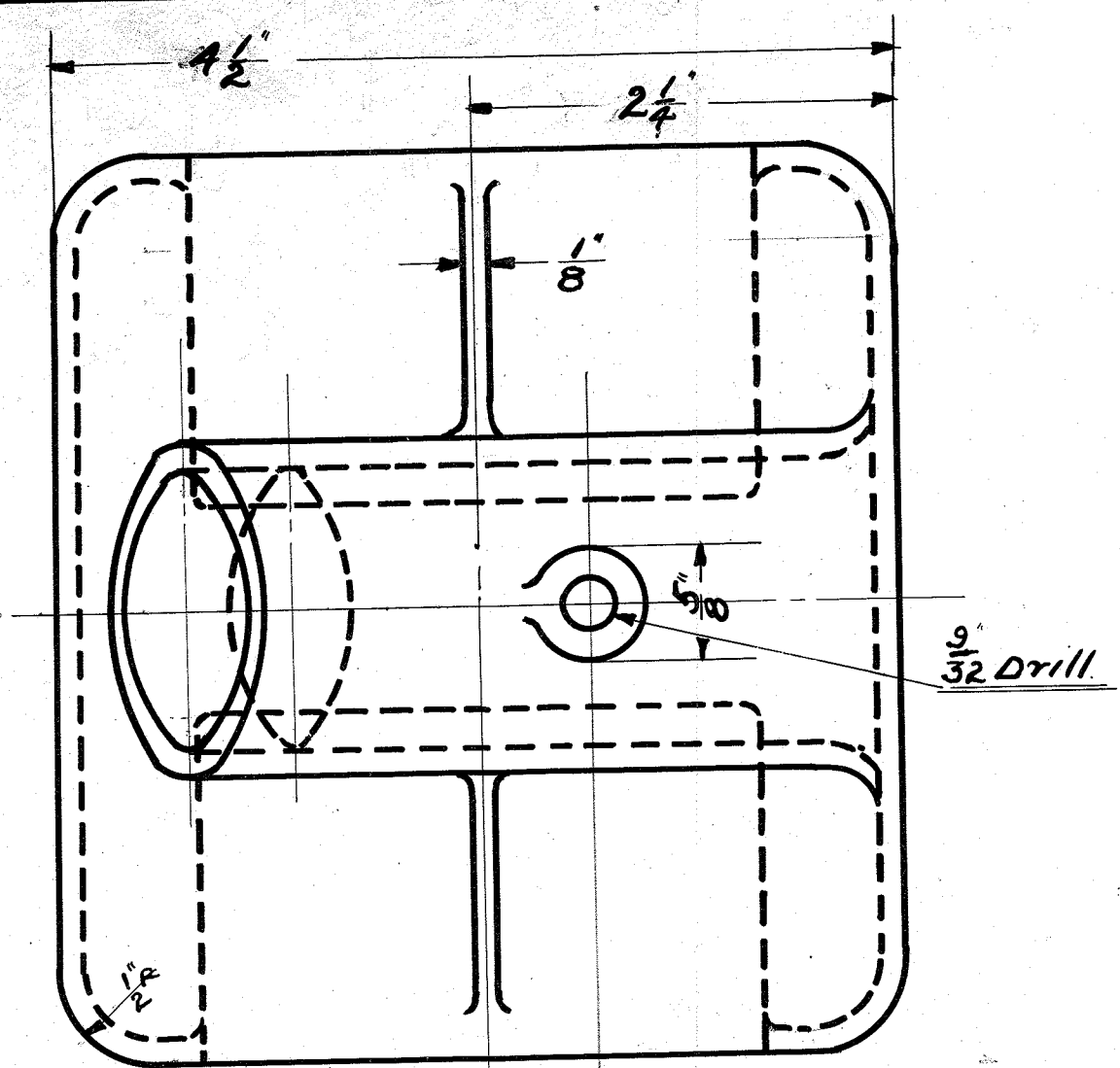


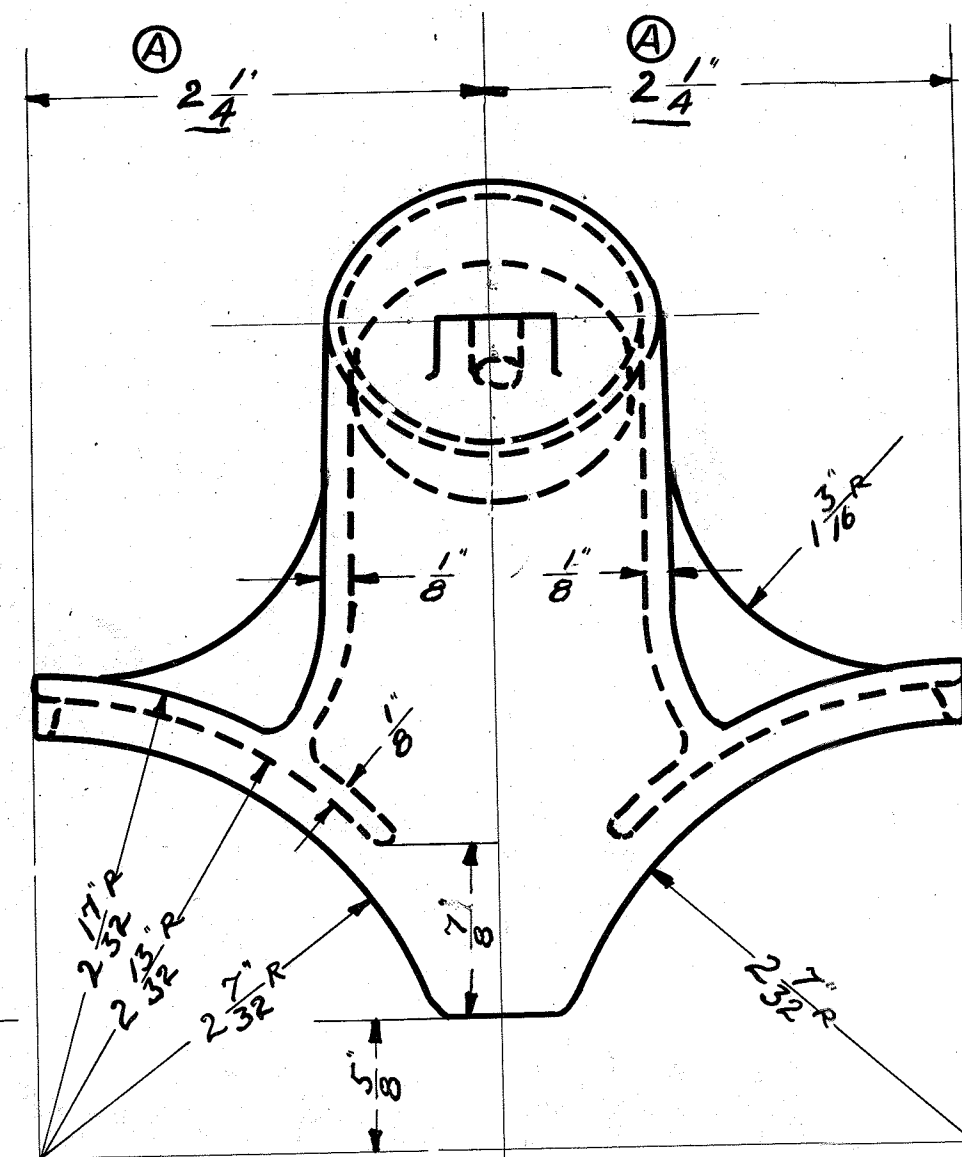
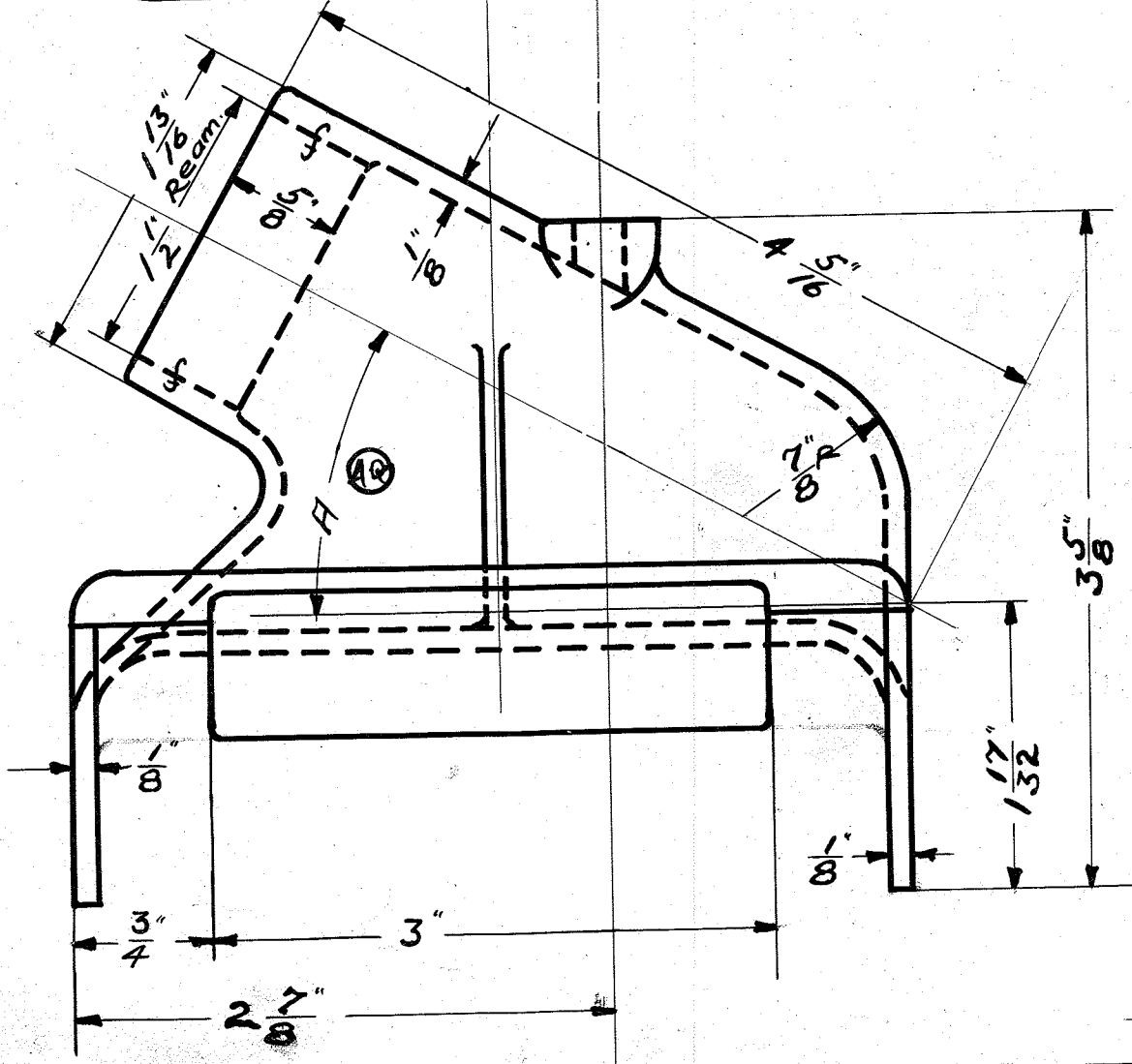
**BC-61**



Ⓐ Angle changed for 4 cyl.

New Design --- 9-30-11.  
 Ⓐ FROM 2 7/16 to 2 1/4 --- 11-11-11.

**NOTE.** ANGLE FOR 4 CYL. 33°  
ANGLE FOR 6 CYL. 28 1/2°



TUDHOPE MOTOR CO.	
Oyillia Canada.	
HOT AIR INTAKE FOR	
CARBURETOR.	
Drawing No. -- B.C. 61.	
Material. -- ALUMINUM CAST'G.	
No. required. -- 1	
Drawn by R.W.C.	CHK'D by F.L.G.
Traced by J.L.A. App. by	
Date --- 9-30-11.	