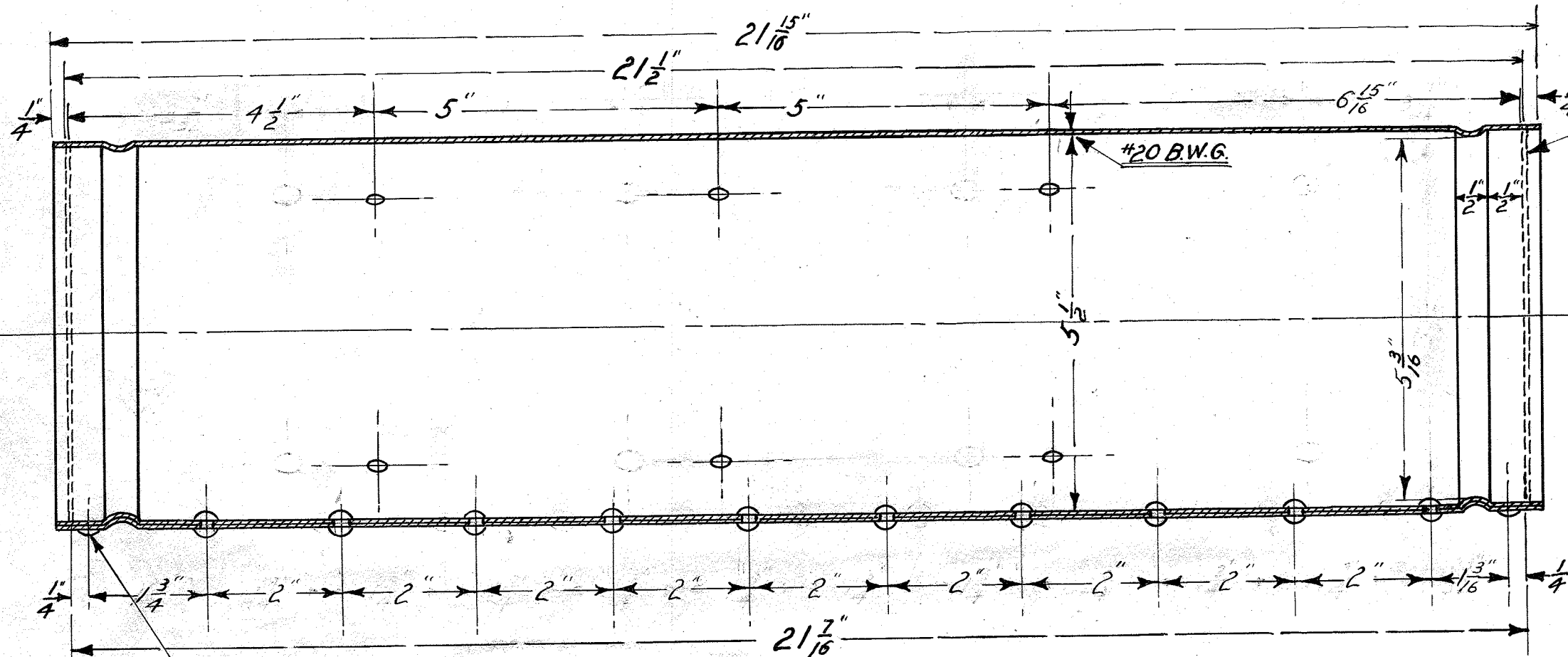
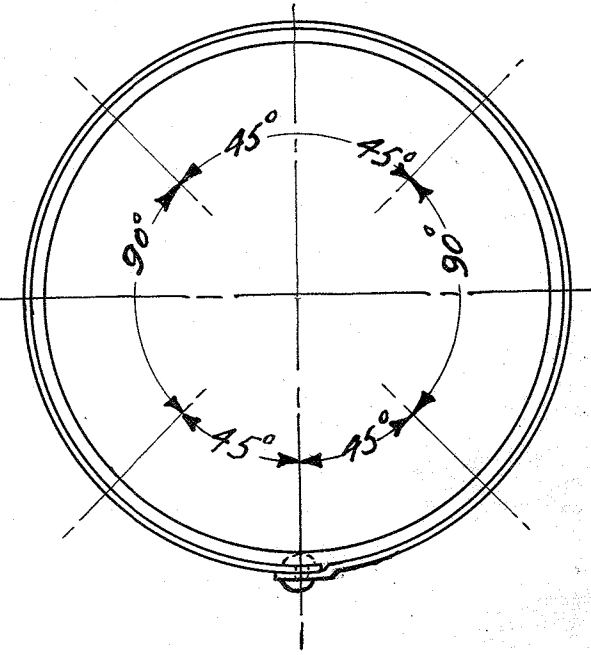


A-N-2-C.



Note: Edge to be turned over after flange is in place.



The end rivets must be flush inside.

All holes punched $\frac{13}{64}$ "

METZGER MOTOR CAR CO.	
DETROIT MICH.	
MUFFLER SHELL	
DRAWING NO. - A-N-2-C	
MATL. - #20-B.W.G.-IRON.	
NO. REQUIRED - 1	
DRAWN BY - <i>UJ</i>	CHECKED BY - <i>O.R</i>
TRACED BY - <i>FLG</i>	APP. BY -
DATE - 6-11-1910	